



### **Product Features:**

- 3 input ports
- Unique design
- Comfort and stylishness

### **Models:**

- LA-Round
- LA-Elongated

**Please read all of the following instructions before beginning installation.**

1. Check to make sure the toilet functions properly before making any construction changes to the property.
2. **Important:** Do not flush anything other than organic human waste and toilet tissue.
3. Do not allow the unit to freeze. See page 12 for more information.
4. Make sure any pipes exposed to freezing temperatures are insulated.
5. Check plumbing fixtures attached to the pump for leaks.
6. Do not use during a power failure, the pump will not operate causing the unit to overflow.
7. Do NOT use one-way air admittance valves. Macerating pumps needs two-way air movement.
8. The pump must be connected to a properly grounded GFCI— ground fault circuit interrupted receptacle on a dedicated 15 AMP circuit.
9. Always disconnect the power source before servicing or handling the pump.
10. Do not use an extension cord with unit.
11. Refrain from making any modifications to, or remove the ground pin from, the pump's power supply cord plug.

**Required Tools**

- Pipe Saw
- Philips screw driver
- Flathead screw driver
- 5/16" socket wrench
- Hammer
- Level
- Tape Measure
- Drill
- 1/2" Masonry Drill Bit (Concrete Floors)
- 1/4" Drill Bit (Wood Floors)

**Recommended Materials**

- PVC/ABS primer and cement
- 1-1/4", t-1/2" rigid (Schedule 40) pipe fittings, as needed
- 3" pipe extension and 3" coupler (depends on installation)
- Tee-wye sewer connection
- Ball valves sized to inlet and discharge pipe sizes
- 2" sewage pump check valve (depending on installation)
- For optimal performance, use long sweep 90° angles.

## Parts Included



### Macerator Parts:

1. Lid
2. Short Discharge Pipe
3. 1-1/2" Blanking plug
4. Tie Wrap
5. Screw Clamp 90-110
6. Fixation leg
7. Impeller PLUS/TOP and pump cover plate P3
8. Three outlet pipe



## Technical Specifications

Power Supply	120V
Input Ports	3
Current	8.0A
Circuit Requirement	Dedicated 15 AMP
Frequency	60 Hz
Duty Cycle	10 foot lift, 1 hour on; 45 minutes off

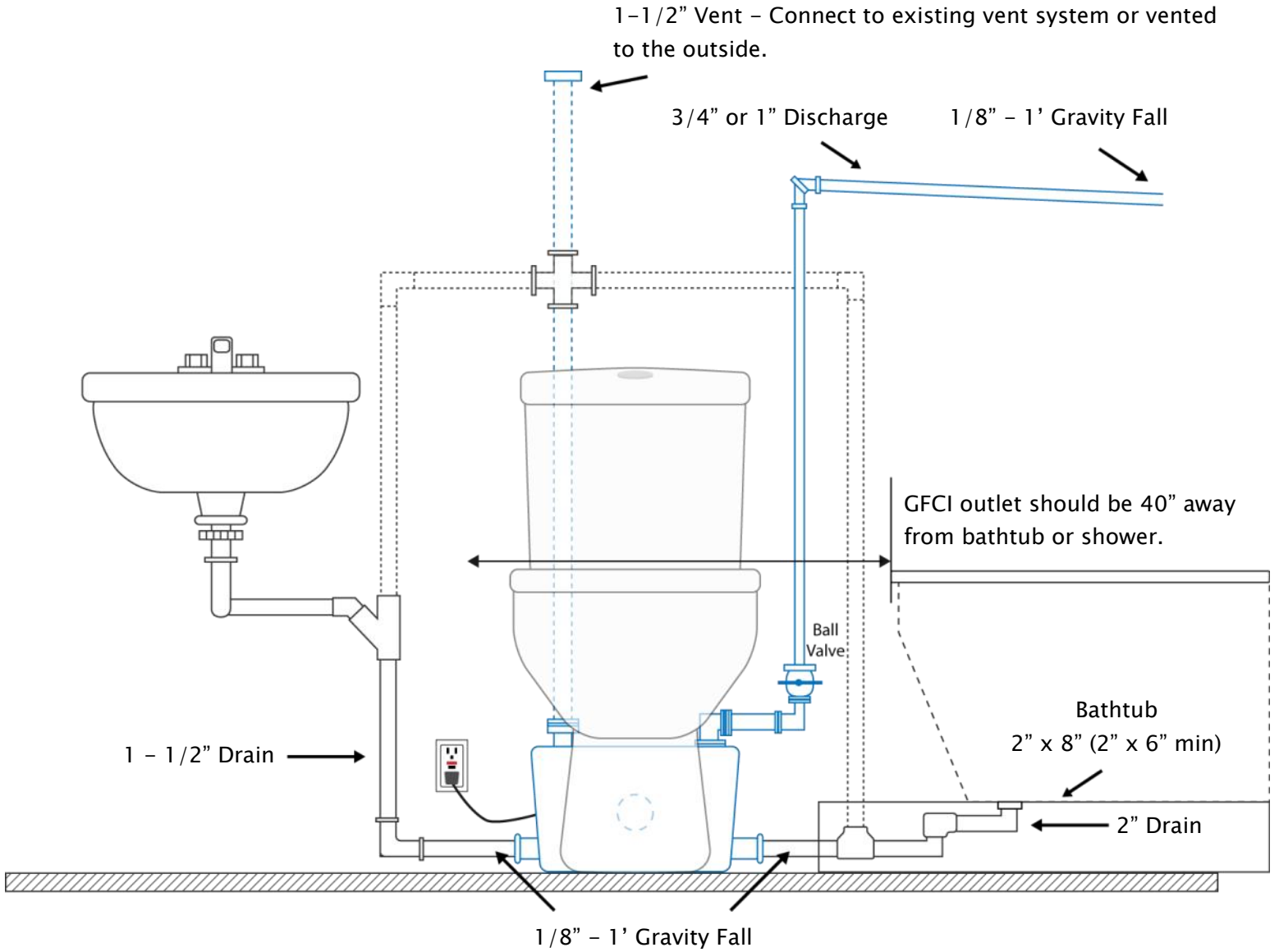
### LA-Round Model Specifications

<b>LA-Round Model Specifications</b>	
Toilet Material	Ceramic
Flush Type	Button; Dual
Color:	White
Toilet Depth	24 in.
Bowl Height	15 3/4 in.

### LA-Elongated Model Specifications

<b>LA-Elongated Model Specifications</b>	
Toilet Material	Ceramic
Flush Type	Button; Dual
Color:	White
Toilet Depth:	Approx. 29 in.
Bowl Height	15 in.

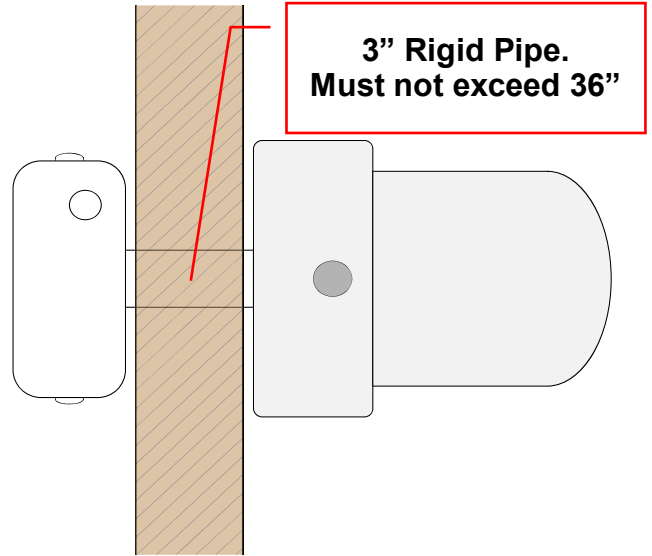
# Plumbing Layout For Your Consideration



# Installation Options

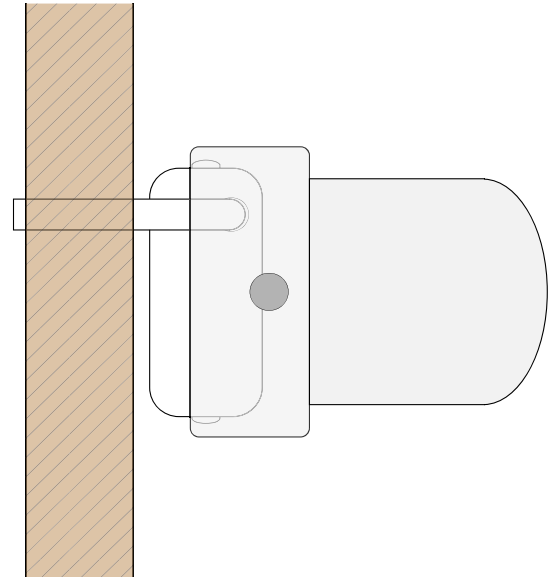
## Option #1 Pump and Plumbing Behind Wall

For this method, you will need a 3" rigid pipe and a 3" pipe coupler (not included) to achieve proper drainage slope. Distance between toilet outlet and pump inlet can not exceed 36". Allow additional space for maintenance purposes.



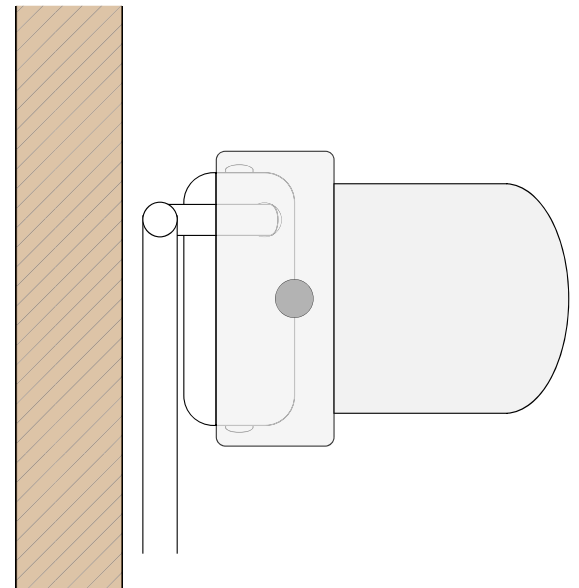
## Option #2 Exposed Pump with Plumbing In Wall

The pump is placed in front of the wall with the plumbing within the wall. Allow additional space for maintenance access purposes.



## Option #3 Pump and Plumbing Exposed

Both the pump and the plumbing are in front of the wall. Allow additional space for maintenance access purposes.



# Toilet and Pump Installation

## Check the following before starting installation:

- Floor site should be finished and level.
- Check for clearance of doors and cabinets as well as any shower enclosure.
- Ensure that all plumbing and electrical fixtures do not interfere with placement of bathroom fixtures.
- Rough plumbing and electrical are completed to code.
- Placement of the electrical outlet must also meet local code. It is recommended to leave a 40" distance from bathtub/shower and within 6' of the pump.
- Drill the floor holes for toilet placement. If installing on a concrete floor, install anchors, but DO NOT permanently secure fixtures until instructed.

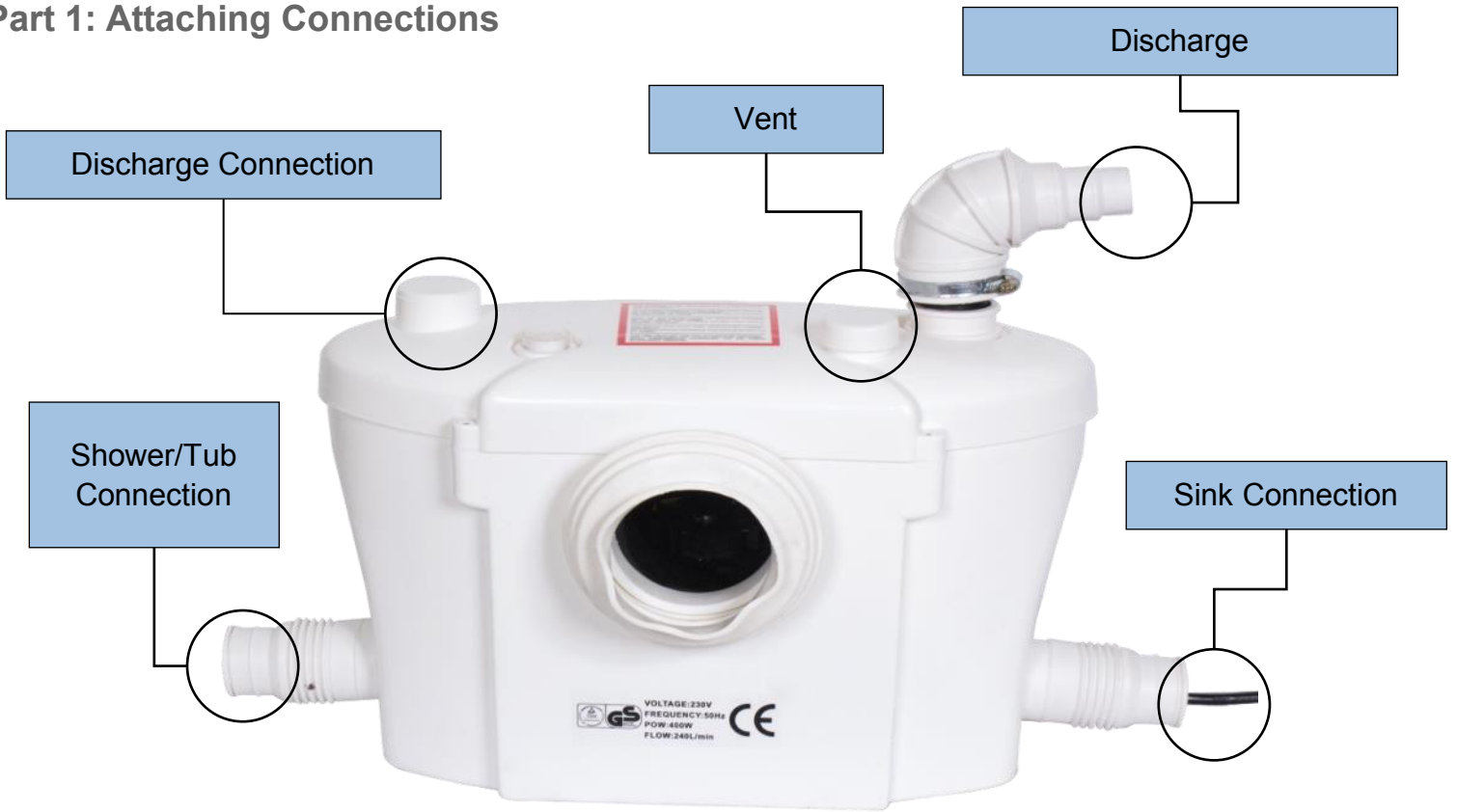
<b>Concrete Floor Installation:</b>	<b>Wood Floor Installation:</b>
<i>Using Anchors:</i> Drill 2 holes using a 1/2" masonry drill bit; then insert the provided screws.	<i>Using Only Screws:</i> Drill 2 pilot holes using a 1/4" drill bit.

**IMPORTANT:** Do not plug the macerator into an extension cord, for this is a safety hazard and can cause injury.

**Caution:** To permit proper drainage it is essential to elevate the shower/tub drain to a minimum of 9" above the finished floor of the installed pump. If necessary, remember to adjust the height of the shower/tub drain upwards to allow proper grade for the plumbing connection to the pump. It is important to plan accordingly.

# Toilet and Pump Installation

## Part 1: Attaching Connections



Vent Line	Shower/Tub/Sink	Discharge
<p>The macerating unit must be vented. It has 2 inlets on the top of the cover: a 1 1/2" cap and a hole of smaller diameter.</p> <p>The unit must be connected to a vent system according to the plumbing codes.</p> <p>Put the waste inlet (provided) on the cap and clamp it down.</p> <p>After, connect the vent pipe. All fixtures connected to the system must also be vented.</p>	<p>To connect to the side entries of the case, use the side connector.</p> <p>Secure with clamps.</p> <p>Plug the unused inlet with blanking plug after greasing the joint.</p> <p>Ensure when connecting a shower to the macerating unit that the underside of the shower tray is raised at least 9 inches from the floor.</p>	<p>These macerating units have an elbow and a bushing. Simply cut off the appropriate portion of the bushing in order to fit it to the discharge pipe.</p> <p>Use ridged wall pipe, not flexible pipe or hose, as flexible pipe may distort over time. Use 3/4" or 1" discharge pipe.</p> <p>Install a "full-part" ball or gate valve and a union in the discharge pipe in order to facilitate the removal of the macerating unit. Place the union or hose connector followed by the valve of the lower portion of the discharge pipe. If you need the unit to pump both vertically and horizontally, remember that 3 feet of vertical lift is equal to 30 feet of horizontal run.</p> <p>Discharge pipe work can be made from 3/4" diameter Type M Copper, CPVC, or PVC. Use long turn bends, not elbows. The connection to the soil-stack or sewer pipe must be made with an approved wye fitting. If you are not comfortable with this procedure, have a plumbing contractor install for you.</p>



# Toilet and Pump Installation

## Part 2: Connection to Bath/Shower/Sink

Before making any connections, make sure there is proper slope of all horizontal runs.

### Bath and Shower Attachment:

1. For proper draining it is essential to elevate the shower/tub drain to a minimum of 9" above the finished floor of the installed pump. If applicable, adjust the height of the shower/tub drain upwards to allow proper grade for the plumbing connection to the pump.
2. If bathtub is connected, the 2" connection can be reduced to 1-1/2" with adequate slope into the pump.
3. Measure rigid pipe from 2" pump inlet to shower/bath drain.
4. Cut pipe to fit, then connect shower/tub to 2" inlet with proper slope.

### Sink Attachment:

1. Measure rigid pipe from sink drain to 1-1/2" pump inlet.
2. Cut pipe to fit.

### Vent to Vent Stack Attachment:

**IMPORTANT:** Do not use one-way air admittance valves (or cheater vents). Macerating pumps need two-way air movement. They must also be vented to the outdoors.

1. Measure rigid pipe from vent on pump to vent connection. Either to new or existing vent stack.
2. Connect rigid pipe to main vent stack of house or directly outdoors.

### Discharge Line Attachment:

**IMPORTANT:** The pump discharge outlet has a built-in check valve. Do not install an additional check valve as this may cause the pump to malfunction.

1. Install 1-1/4" ball valve approximately 6" from pump discharge outlet.
2. Install 1-1/4" plumbing line to the home's main waste line. There must be at least 3 feet of run from the pump before connecting to the main waste line.

# Toilet and Pump Installation

## Part 3: Connecting Toilet and Pump

**The following instructions apply for Option 1 seen on page 6.**

**NOTE: Make sure the floor holes are drilled before you begin the following steps.**

- 1) Drill a hole in the wall sized to accommodate pipe slope.
- 2) Position clamp onto the toilet outlet. Hint: Apply soapy water to lubricate for easier clamp application; make sure you use non-petroleum-based products only!
- 3) Install the pan gasket in place making sure it covers at least 1-1/2" of the toilet outlet.
- 4) Cut a 3" rigid pipe to fit; do not let it exceed 36".
- 5) Insert the pipe through the wall, connecting one end to the toilet outlet and the other to the macerator.

The pan gasket must cover at least 1-1/2" of the pipe. The side cover of the macerator must also cover at least 1-1/2" of the pipe.

**The following instructions apply for Option 2 and 3 on page 6**

- 1) Position clamp onto the discharge outlet on the rear side of the toilet. If necessary, apply soapy water to lubricate the clamp for easy application.
- 2) Position the side cover of the macerator onto the toilet outlet and tighten, making sure it covers at least 1-1/2" of the outlet.

# Toilet and Pump Installation

## Part 4: Toilet Assembly

**Note:** Assemble water tank as explained in the supplied instruction sheet, before proceeding with the following steps.

1. Check to make sure toilet is leveled before securing the toilet to the floor.
2. Install water tank in place. It is recommended to apply caulk around the base of the opening.
3. Secure the water tank with the provided nuts and bolts.
4. Verify that proper placement of the hose is established.
5. Install the seat cover bolts into the proper position, and secure by hand-tightening.

## Part 5: Testing the System

1. Finish connecting all fittings and fixtures
2. Open the water supply valve to toilet and/or fixtures.
3. Check for leaks and correct as needed.
4. Plug the pump into wall outlet.
5. Flush toilet.
6. Double check for leaks; tighten and adjust clamps and connections if necessary.

# System Operation

## What to Expect

This toilet operates on a different principle than a typical siphon toilet, resulting in a different sound and flush action. When activated, the pump pulses a few times.

## Cleaning

Use only non-abrasive, non-petroleum products to clean the pump.

## Prime the Pump

If pump initially runs for more than 10 seconds, prime the pump as follows:

- a. Unplug cord from wall outlet.
- b. Wait 15 seconds. Plug cord back into wall outlet.
- c. Flush again. If pump runs more than 10 seconds, repeats steps a-c.

## Winterization

If the Lift Assure system is exposed to freezing temperatures, please make sure that all fixtures, inlet, and discharge lines are winterized using non-toxic propylene glycol (RV Marine AntiFreeze). Use sufficient quantity of antifreeze to ensure all pipes are protected.

First, you must shut off the water supply. Flush toilet to empty the tank. Pour RV/Marine Antifreeze into toilet and all fixtures. Press manual switch to run antifreeze through system.

## Clearing Debris from Pump

While the Lift Assure does not need any maintenance under normal conditions, it is okay to clean out the macerating unit once a year. Do not use bleach. The macerating unit starts automatically once the toilet is flushed or the other bathroom appliance discharge and cease operation once the contents have finished pumping.

**ATTENTION: Do not return any merchandise to the vendor.**

*For customer service, returns, or technical questions, please call Lift Assure's technical support at (1-877-862-7049) or (1-727-233-0490).*

**LIMITED WARRANTY**  
**One Year From Date of Purchase**

As per terms and conditions below, Lift Assure, (herein referred to as the Company) warrants that it will repair or replace the product or any of its component parts, at the Company's discretion if it deems that the product or part is defective or fails to meet the rated performance due to a manufacturing or material default.

If replacement is to be issued, this will only be extended to the first month (30 days) starting from the date of purchase. Warranty repairs will apply after such date up to the warranty conclusion.

**Terms and Conditions**

- The product must be installed in accordance to the manual or manuals.
- The product must not have been subject to accident, negligence, misuse, improper installation or repair, or exposure to harmful products or substances.
- The alleged defect or fault must be reported to the Company during the established warranty period.
- The warranty is for one year from purchase date.
- The warranty is for **parts only**. *The warranty covers the cost of repair or replacement of defective parts. It also covers the cost of freight (ground service) shipping of replacement parts that are covered under this warranty to you.*

**Part and Product Exchange**

- The customer must have an "authorized return number" from the manufacturer in order to validate exchange.
- Lift Assure reserves the right to decline repair at their discretion. Warranty does not cover the cost of the exchange or total replacement of the unit.
- The customer must provide proof of purchase to warrant a repair or an exchange. The warranty is void if the identification number or date of manufacture stamp have been tampered with or deemed illegible in any way.

**Limitations**

1. In no event shall the Company be liable for any special, incidental, or consequential damage, loss, or injury of any whatsoever nature or kind arising from or in connection with the product or any component thereof.
2. The guarantee is transferable only when the product remains at the same premises as its initial installation.

For questions and further explanation, be sure to contact Lift Assure support staff at the phone number provided.

## IMPORTANT

When claiming a warranty repair, you will need the information you have written down below.  
Please ensure that you have all particulars when requesting work.

<b>Owner Name:</b>	
<b>Order/Purchase Number:</b>	
<b>Installation Address:</b>	
<b>Purchased From:</b>	
<b>Installed by:</b>	
<b>Date of Purchase:</b>	
<b>Serial Number:</b>	
<b>Date of Manufacture:</b> (see manufacture's tag on unit)	